



**WE ARE RUGGED**

*Rugged. Trusted.*

**AIR**



**LAND**



**SEA**



MILCOTS builds rugged displays, panel PCs, and compact computers for the most demanding government and defense conditions



# OUR CUSTOMERS

*Rugged. Trusted.*



GENERAL DYNAMICS  
Mission Systems



NORTHROP GRUMMAN



GENERAL DYNAMICS  
Electric Boat



- ✓ Designing Rugged Displays, Panel PCs and Computers since 2002
- ✓ Milcots became a separate company in 2006
- ✓ Cage Code - 5ACD8
- ✓ Registered in SAM
- ✓ NAICS Codes 334118, 334111, 336411, 334513
- ✓ Raytheon EPIC Award for Supplier Excellence 2018
- ✓ NIST, ITAR, DFARS, GIDEP, ISO 9001:2015 Certified /Registered

- ✓ State of the art 25,000 sq. ft. production facility in New Jersey, USA
- ✓ 400 sq. ft. Class 10k Clean room
- ✓ Shock, vibration, thermal, humidity testing capabilities in house
- ✓ Engineering, design, development, manufacturing, testing & support under one roof





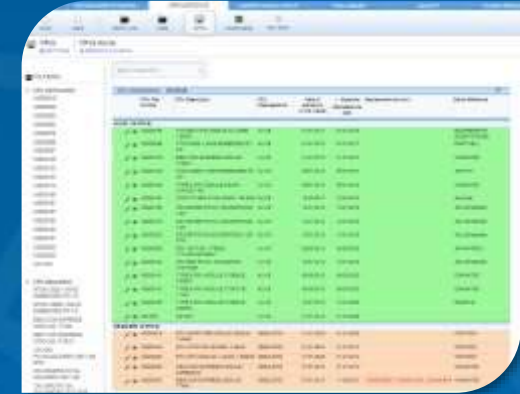


Our commitment to best practices is demonstrated in every process from inventory to testing, quality control and shipping.



**Milcots is proud to be awarded with the  
Raytheon EPIC Supplier Excellence Award 2018**

- To ensure the longevity that DOD programs require, Milcots developed their own software tracking program that monitors EOL for the subsystems used in their products. Successful execution has enabled Milcots to easily support 5-7 year requirements and multiple programs with 10+ year life spans that include ARC (10+) CWLS (10+ years) and SQQ-89 (10+ years).
- Ever mindful of cyber security threats and counterfeit parts we are ITAR, DFARS and NIST compliant and an active member of GIDEP (counterfeit parts). We are certified ISO9001:2015 and working towards AS9100 certification 2021.





## Design Modularity is the Essence of Milcots Solutions

- Milcots designs are based on Standard Building Blocks (SBB)
- Each SBB is Validated & Thoroughly Tested
- Using proven industrial grade components to ensure client's needs are met, Milcots designs using industrial consortium standard components with reduced EOL/obsolescence issues and extended lifecycles.
- Examples, Power Supplies, Carrier Boards, CPU, Video Controllers

## Why Our Customers Love This Approach

- Replace obsolete products with minimum NRE
- Extend the life cycle of old electronic systems
- Shorten the design cycle of new solutions
- Reduce qualification risks
- Guarantee 5-7 years minimum life cycles
- Customer – centric approach



- ❖ Extensive In-House Testing Capability:
  - ✓ Vibration, shock
  - ✓ Temperature, humidity
- ❖ 3D CAD models provided to the customer
- ❖ Installation Drawings
- ❖ User Manuals
- ❖ Support and Service in the USA
- ❖ Extended warranties available





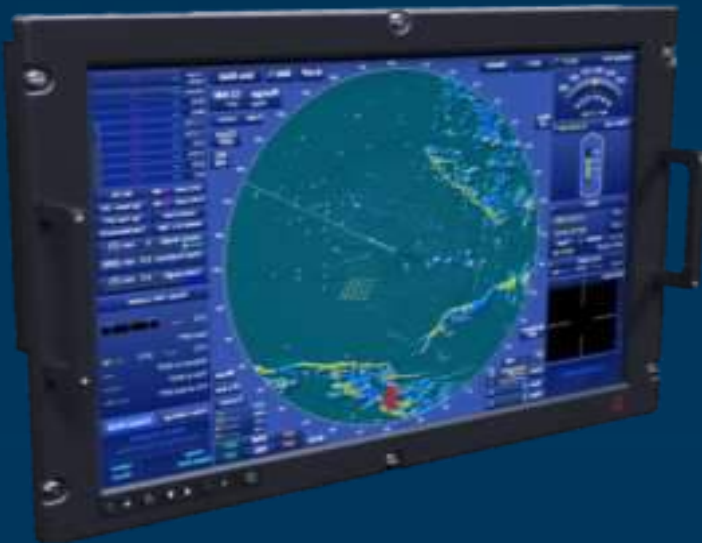
## ❖ Winch Control - Towage & Recovery (MH60)

- ✓ DO160 / MIL STD 810 / MIL STD 461
- ✓ 10" Display
- ✓ NVIS / HB LCD
- ✓ Custom bezel keys
- ✓ FFF with legacy display
- ✓ Analog & digital I/O
- ✓ Night mode luminance beyond MIL STD 3009



## ❖ Advanced Recovery Control Panel

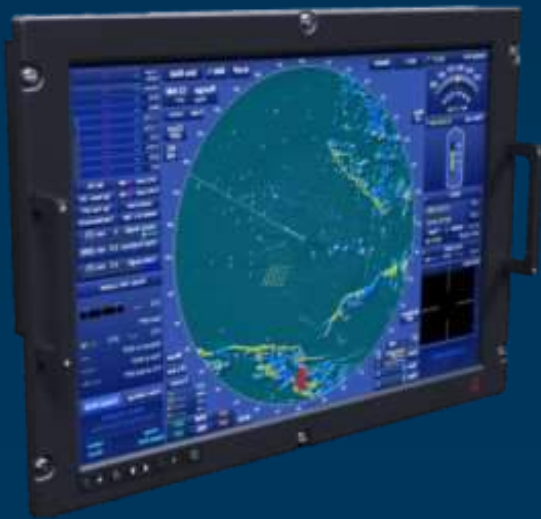
- ✓ N68335-15-G-0008
- ✓ Deployed on CVN since 2010
- ✓ MIL STD 810, MIL S 901D/ MIL STD 461
- ✓ 19" 1280x1024 panel
- ✓ FFF replacement





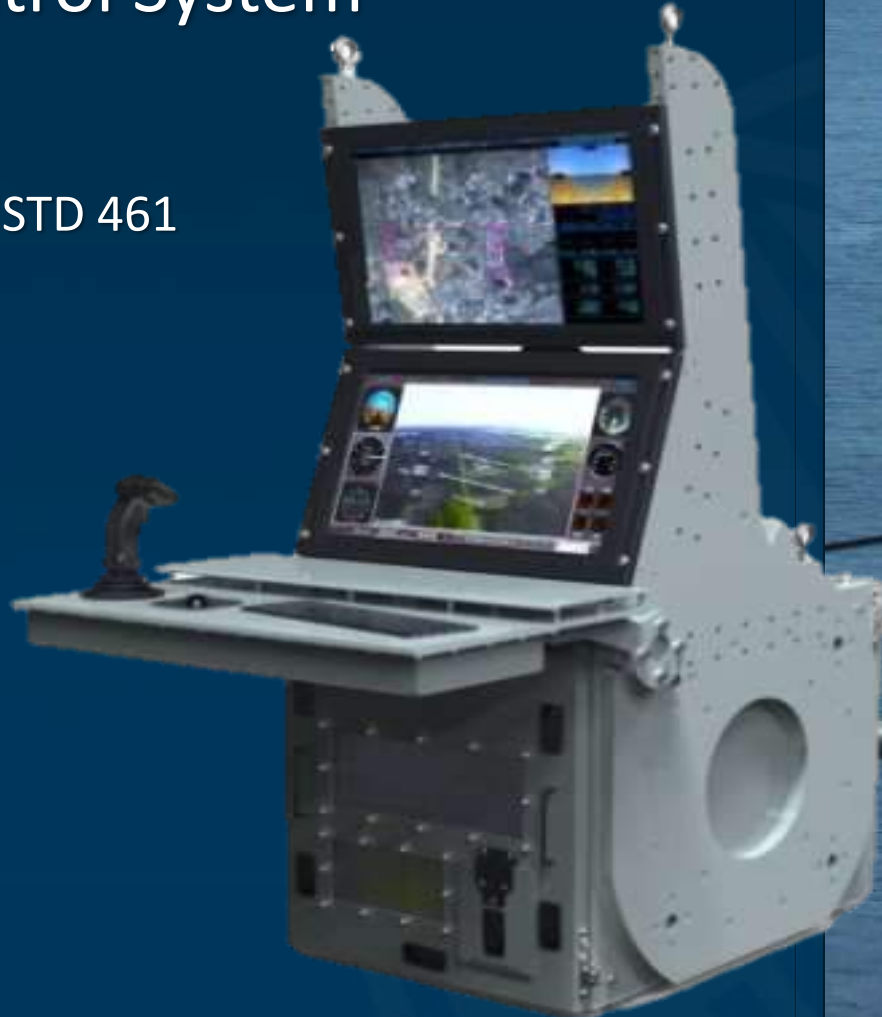
## ❖ Repair Station Console (DDG)

- ✓ N64498-16-P-5351
- ✓ MIL STD 810, MIL S 901D/ MIL STD 461
- ✓ 21" 1600x1200 display
- ✓ FFF Replacement



## ❖ Fire Scout Mission Control System

- ✓ N68335-16-D-0047 (901D)
- ✓ Land / Sea system
- ✓ MIL STD 810, MIL S 901/ MIL STD 461
- ✓ 20" 1600x1200 displays
- ✓ 24" 1920x1200 displays





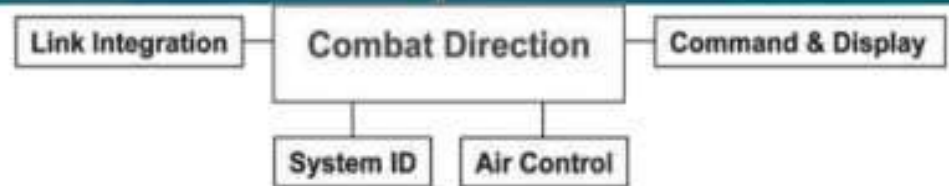
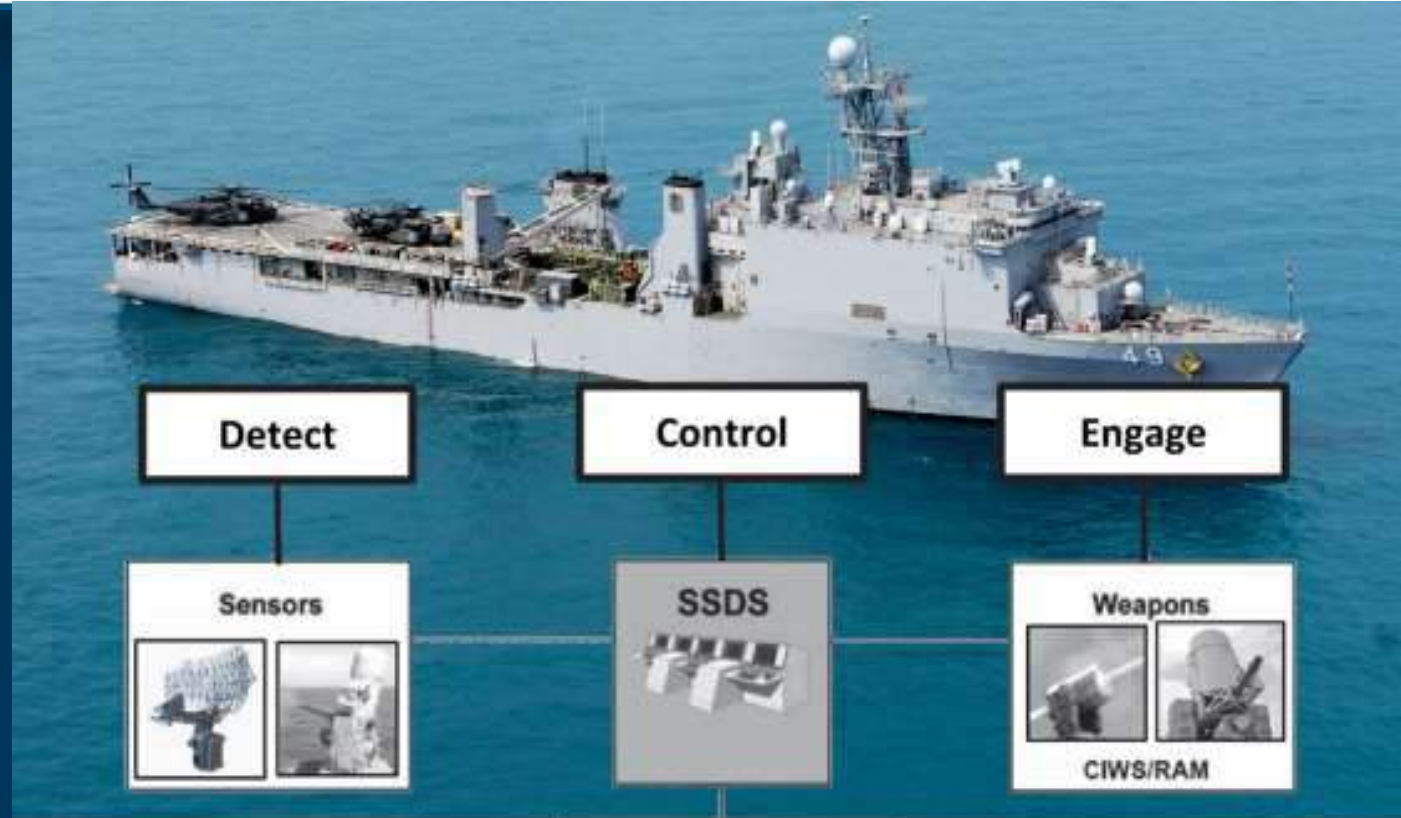
## ❖ SQQ-89 E-Status Board (DDG)

- ✓ N00024-16-C-5202
- ✓ MIL STD 461 / MIL S 901D / MIL STD 167 / MIL STD 810
- ✓ SA42HD



## ❖ SSDS (LSD CVN LHA LPD)

- ✓ N00178-04-D-4091
- ✓ N00178-10-D-6124
- ✓ SA55HD
- ✓ 6020UXI
- ✓ MIL STD 810, MIL S 901D/ MIL STD 461



CIWS - Close-In Weapon System  
 ID - Identification  
 RAM - Rolling Airframe Missile  
 SSDS - Ship Self-Defense System



## ❖ Weapon Launch Console (VA Class)

- ✓ Delivery and support since 2010
- ✓ MIL STD 901 / MIL STD 461 / MIL STD 810
- ✓ 20.1" 1600 x1200 - i7 embedded
- ✓ 19" 1280x 1024 - i7 embedded
- ✓ Touch sensor
- ✓ Dual Geth
- ✓ RHE 7 - SSD removable





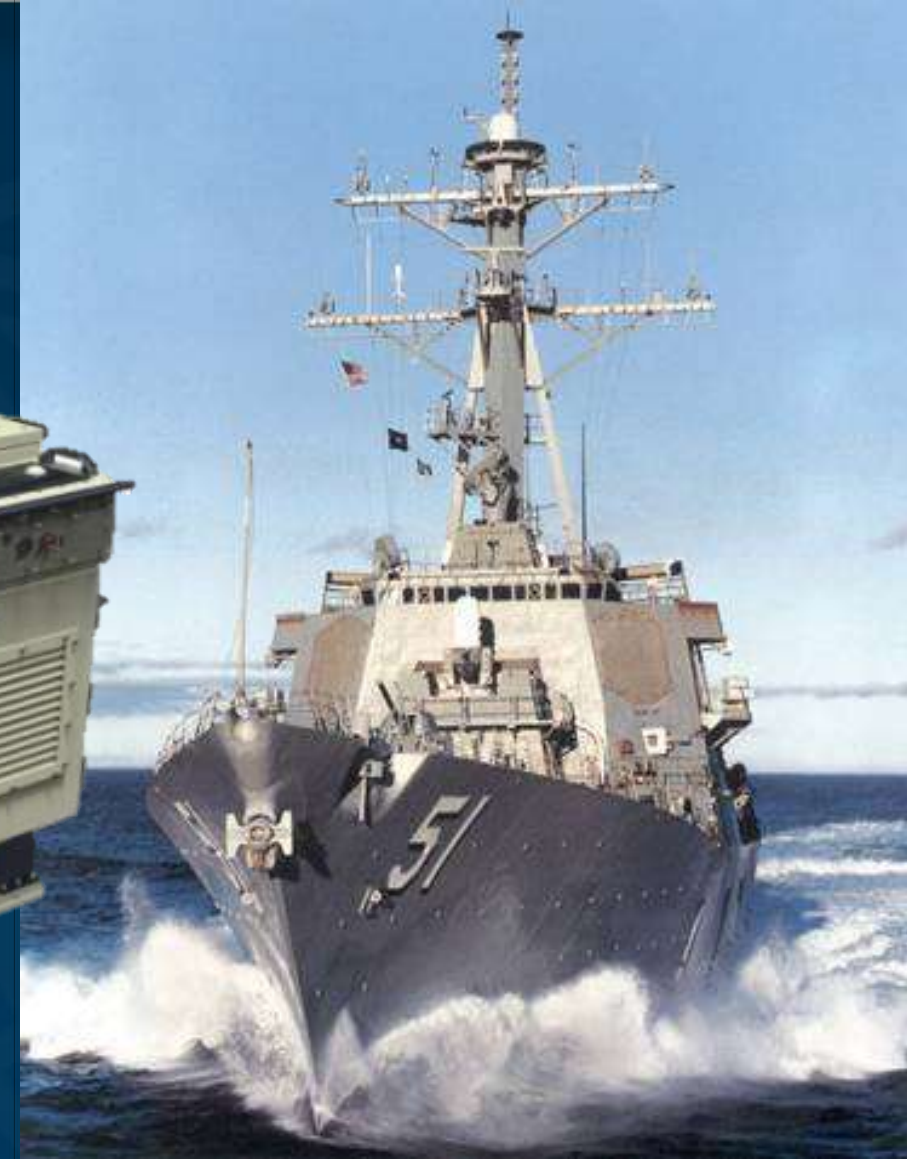
## ❖ MK 46 /MK 50 (LPD, LCS)

- ✓ N00178-05-D-4318
- ✓ RP10XG
- ✓ MIL STD 461 / MIL S 901D / MIL STD 167 / MIL STD 810



## ❖ SQQ89 CADRT (DDG)

- ✓ MIL STD 461 / MIL S 901D / MIL STD 167 / MIL STD 810
- ✓ 3 generations since 2010
- ✓ 46in 1920x1080
- ✓ PCAP multi-touch sensor
- ✓ Analog and digital I/O





❖ Bridge control displays (LPD & CVN)

- ✓ MIL STD 461 / MIL S 901D / MIL STD 167 / MIL STD 810
- ✓ 24in (1920x1200)
- ✓ Night Vision variant as per MIL STD 3009





## ❖ INS-R (DDG, CG, CVN, LHA)

- ✓ N65236-16-D-8001
- ✓ N65236-16-D-4800
- ✓ 24" RUGGED TACTILE PANEL PC 1920 x 1200
- ✓ MIL STD 461 / MIL S 901D / MIL STD 167 / MIL STD 810
- ✓ EMBEDDED INTEL QUAD CORE



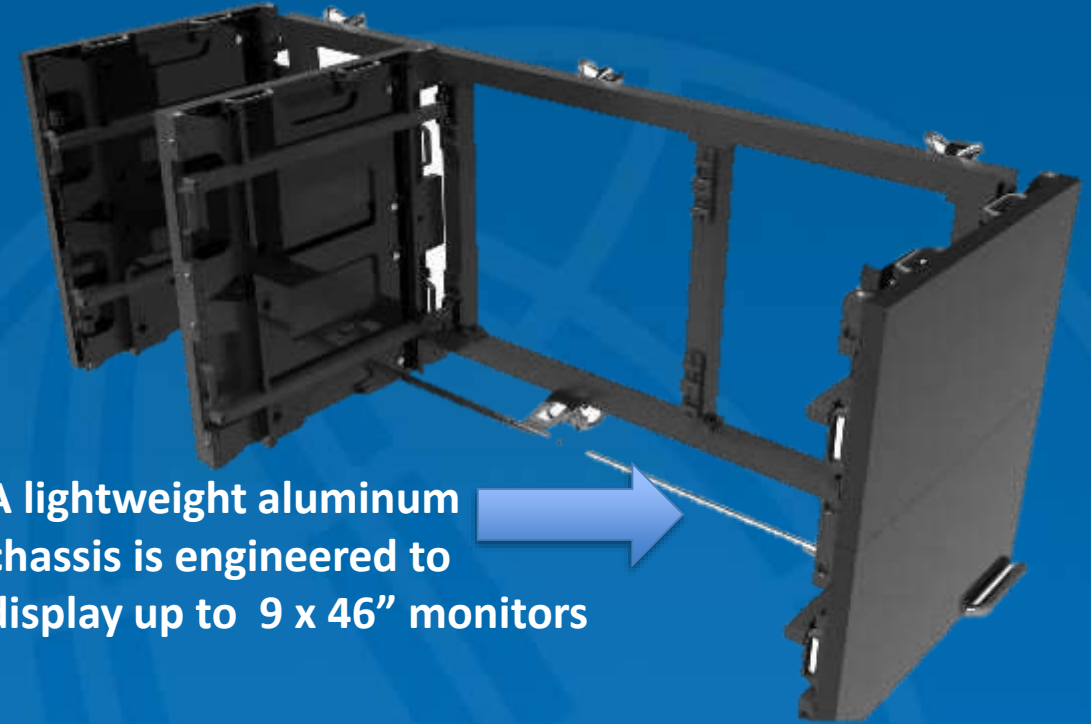
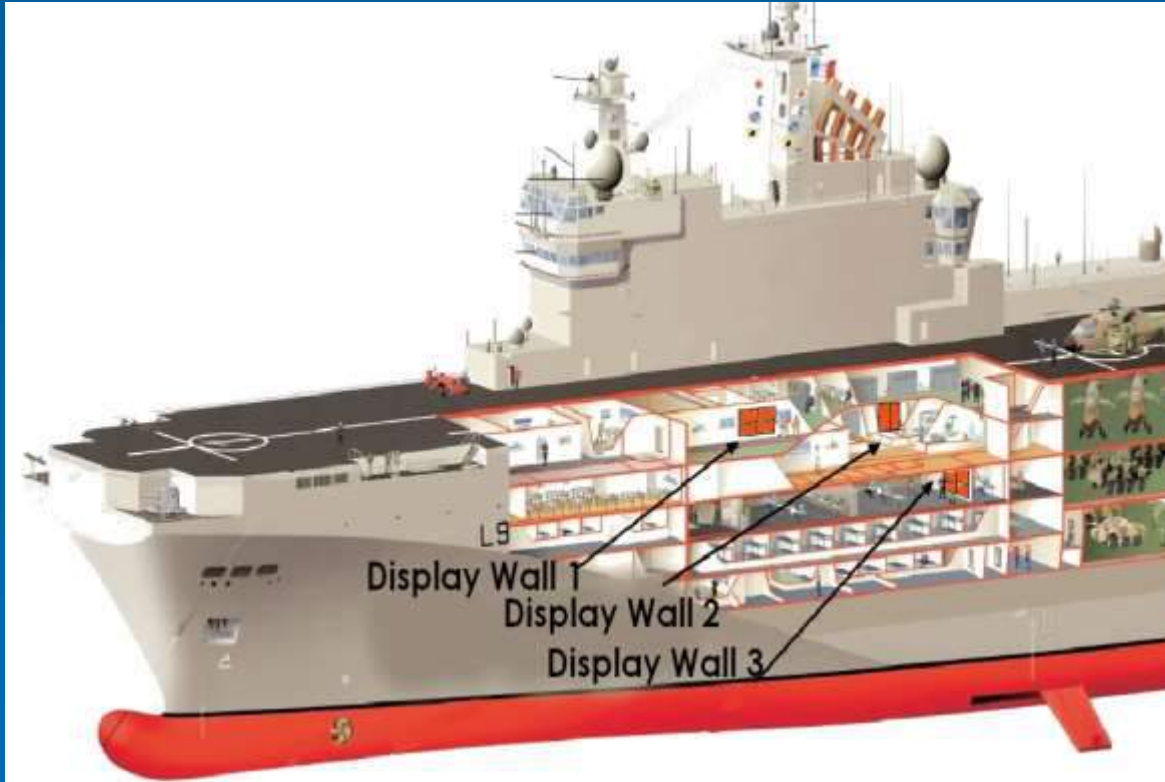
## Key Features



*Video Wall shown here as 3 x 2 x 46” screens – (landscape) but also available in 3 x 1 & 3 x 3 formats and portrait formats*

- Secured and off network systems options
- One graphic computer serves and controls multiple video wall systems for independent, edited or identical scenarios/content for each wall
- Mechanical design allows for stress free front access to each LCD screen
- LCD touch programmable keypad controller for each video wall
- Shock isolation structures to MIL S 901D
- Fiber optic or copper wire link between video walls
- Currently deployed on several NATO vessels and certified by NATO forces.
- USA based design, manufacture and support for custom solutions





A lightweight aluminum chassis is engineered to display up to 9 x 46" monitors

Each video wall can be managed independently while keeping the source information secure allowing for edited versions of the same content or completely different information.



**MILCOTS DISPLAYS AND PANEL COMPUTERS ARE DEPLOYED IN A WIDE RANGE OF DoD PROGRAMS INCLUDING:**

- **AAG (Advanced Arresting Gear)**
- **AI&R (Active Intercept and Ranging)**
- **DDG Mod MCS (Machinery Control System)**
- **EMALS (Electromagnetic Aircraft Launch System)**
- **Fire Scout Command and Control System**
- **Halifax Class Modernization**
- **CWLS VA class weapon launch system**
- **JPALS (Joint Precision Approach and Landing System)**
- **LCS Fire Control**
- **LCS MK-57 Weapons Launching System**
- **LHA/LHD MCS (Machinery Control System )**
- **SQ-Q89 CADRT (Computer Aided Dead Reckoning Table)**
- **SSDS (Ship Self Defense System)**

Model	Diagonal	Resolution
URP7WV – RP7WV	7"	800x600
URP8XG – RP8XG	8.4"	1024x768
URP10XG – RP10XG	10.4"	1024 x 768
URP12XG- RP12XG	12.1"	1024x768
URP15XG – RP15XG	15"	1024 x 768
RP15HD	15.6"	1920x1080
URP17SX – RP17SX	17"	1280 x 1024
RP17HD	17.3"	1920x1080
URP19SX – RP19SX	19"	1280 x 1024
URP20UX – RP20UX	20.1"	1600 x 1200
RP21UX	21.3"	1600 x 1200
RP21HD	21.5"	1920x1080
RP23UX	23.1"	1600 x 1200
RP24WU	24"	1920 x 1200
RP40HD	40"	1920x1080
RP42HD	42"	1920x1080
RP46HD	46"	1920 x 1080
RP50HD	50"	1920 x 1080
RP55HD	55"	1920 x 1080

## KEY FEATURES:

Sealed Enclosures: impervious to fluids and contaminants for most RP panels, rugged as per MIL-SPEC requirements, CPU architecture relies on industrial form factors with MILCOTS proprietary carrier boards.



## OPTIONS:

EMI, touch screen, power, dimming, NVIS, extended temperature range, multi channels video input

### Multiple I/O:

USB, LAN, Serial, Eth, Power

### Multiple O/S:

Windows and Linux

### Long Life Time & Support:

Typical commitment 10 years

Stand Alone Version	Panel Mount Version	Diagonal	Resolution
SA05VG	PM05VG	5"	640x480
SA07WV	PM7WV	7"	800x480
SA10XG	PM10XG	10.4"	1024 x 768
SA12XG	PM12XG	12.1"	1024x768
SA15XG	PM15XG	15"	1024 x 768
SA15HD	PM15HD (*)	15.6"	1920x1080
SA17SX	PM17SX	17"	1280 x 1024
SA17HD	PM17HD (*)	17.3"	1920x1080
SA19SX	PM19SX	19"	1280 x 1024
SA20UX	PM20UX	20.1"	1600 x 1200
SA21UX	PM21UX	21.3"	1600 x 1200
SA21HD	PM21HD	21.5"	1920x1080
SA23UX	PM23UX	23.1"	1600 x 1200
SA24WU	PM24WU	24"	1920 x 1200
SA32HD	PM32HD (*)	32"	2560 x 1600
SA40HD	PM40HD (*)	40"	1920x1080
SA42HD	PM42HD (*)	42"	1920x1080
SA46HD	PM46HD	46"	1920 x 1080
SA55HD	PM55HD (*)	55"	1920 x 1080

## KEY FEATURES:

- ✓ Aluminum Housing
- ✓ Rugged Front Glass



## OPTIONS:

- ✓ Touch Screen
- ✓ Power
- ✓ Dimming
- ✓ High Bright
- ✓ front Switch Keys
- ✓ Extended Temperature
- ✓ Multiple I/O
- ✓ NVIS, BIT, RGB
- ✓ DVI, HD-SDI





**Milcots, LLC**  
**211 Island Rd**  
**Mahwah, NJ 07430**



**Tel: +1-845-357-6700**  
**Fax: +1-845-368-8799**



**www.milcots.com**  
**info@milcots.com**  
**Keith.Vreeland@milcots.com**

**Jeff.Fields@milcots.com**  
**Clare.Archer@milcots.com**

**John Aldon, Milcots President**

